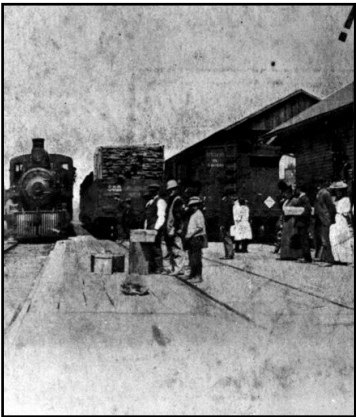


History of the Trail to Date

The 60-foot-wide Buffalo Valley Rail Trail corridor was acquired in 2008 by the Lewisburg Area Recreation Authority, with support from Union County. In 2009, PennDOT awarded LARA a \$3.7 million grant to begin construction of Phase I of the project, a 9-mile stretch linking Lewisburg and Mifflinburg. Engineering of Phase 1 of the BVRT began in the fall of 2009. This phase is planned to be under construction by 2010 and complete by 2011. Future phases will carry the

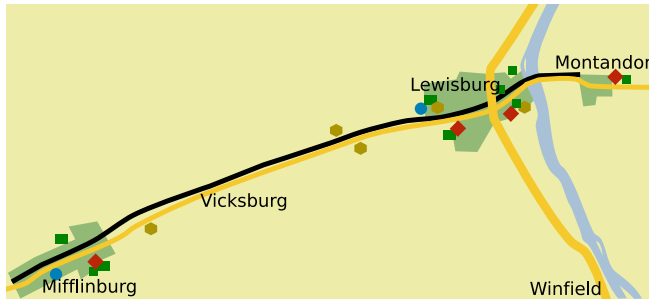


Pennsylvania Railway Station Mifflinburg, PA
Circa 1910
Courtesy of Union County Historical Society

trail across the Susquehanna River on the historic railroad bridge and into Montandon. Preliminary design and cost analysis on these future phases is expected to begin in 2010.

There had been no commercial train traffic on the BVRT corridor for many years prior to West Shore Railroad's decision to sell the branch line to LARA. In order to preserve and respect the railroading tradition, LARA donated two rail turnouts to the National Railway Historical Society, preserved two sticks of rail for donation to the Mifflinburg and Lewisburg school systems, and protected whistle stop and mile marker signs during the salvage process so they can be viewed by trail users and appreciated as part of the Buffalo Valley's heritage.

Artist's Rendering (Cover)
Courtesy Wilbur Pearson of Amherst, MA



Rail Trails Connect:

- Communities
-  Farm Markets
-  Schools
-  Public Libraries
-  Town Centers
-  Parks & Athletic Fields

Economic & Health Benefits:

Trails bring job growth in construction and maintenance as well as tourism-related opportunities like bike rentals, restaurants and lodging. A National Park Service study revealed that the economic impact of a trail involves not only new trail-related businesses but the expansion of existing businesses related to travel, equipment, clothes, food, souvenirs and maps.

Trails have been shown to bolster property values and make adjacent properties easier to sell. In a 2002 survey of recent home buyers, trails ranked as the second most important community amenity out of a list of 18 choices. Studies have shown that lots adjacent to trails sold faster and for an average of 9% more than similar property not located next to a trail.

The Buffalo Valley Rail Trail will offer a safe and fun way for people of all ages to enjoy the health benefits of walking, running, biking and cross country skiing.

Get on Board!

Help us reach our 3-year, \$500,000 goal!

Pledge on-line at www.golara.org

- or -

Fill out the form below and mail it to:

Buffalo Valley Rail Trail – LARA
629 Fairground Road
Lewisburg, PA 17837

Name: _____

Address: _____

Phone: _____

Email: _____

Pledge

Total Pledge: \$ _____

Pledge Term:

One Year

Two Years

Three Years

Please Invoice Me:

Once (by Dec 31)

Quarterly (Dec, Mar, July, Sept)

Annually (by Dec 31)

One Time Donation

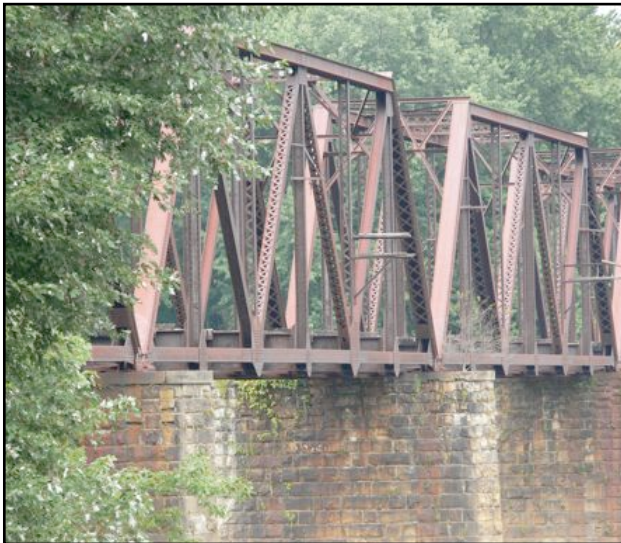
Payment Enclosed: \$ _____

Like a magnificent gem on display, the Buffalo Valley Rail Trail will attract visitors and allow residents from Lewisburg, Mifflinburg, Montandon and points in between to enjoy the beauty of their valley at their own pace in every season of the year while providing a boost to the local economy.

When completed, the trail will be enjoyed by people of all ages and abilities, whether they're just out for a short stroll, heading out to do some shopping, following a fitness program or commuting between home and work without the use of fossil fuels.

Your tax-deductible donation is needed to help make this dream a reality.

Your donation will help leverage over \$3.7 million in state and federal grants. Our goal is to match this grant funding with \$500,000 in local donations by September of 2012. Thanks to our lead donors, we are already making progress toward this goal.



Railroad Bridge over the Susquehanna at Lewisburg PA
September 2009
Courtesy Tom Egan

PRSRT-STD
US Postage
PAID
Lewisburg,
Pa 17837
Permit No. 43



Buffalo Valley Rail Trail
Moving us into the future